

For waste water

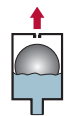
Function



Air intake (up to 160 m³/h) preventing from harmful negative pressures.



Start-up air discharge (up to 330 m³/h) for high velocity air discharge.



Permanent air discharge (up to 56 m³/h) for stable efficiency by air free flow regime.



Areas of application

Waste water

Technical features

- Pressure rating PN 6* (sealing system: 0,05 – 6 bar)
PN 10 (sealing system: 0,1 – 10 bar)
PN 16* (sealing system: 0,2 – 16 bar)
- Connection Male thread: 2", 3"
Flanges DN 50 – DN 200

Accessories*

- Storz coupling as process connection
- Adjustable throttle for compressed air flushing
- Non-slam adaptor
- One-way-in air valve.

Remark

A gate valve between the valve and the pipe must be provided and mounted on site.

Use ventilated covers in case of shaft installation.

Execution

Standard: Steel coated

Stainless steel: Stainless steel or Duplex

Design

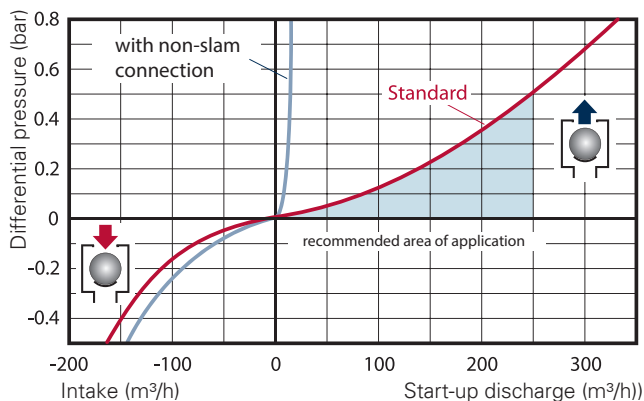
Big orifice: 804 mm²

Small orifice: 12 mm²

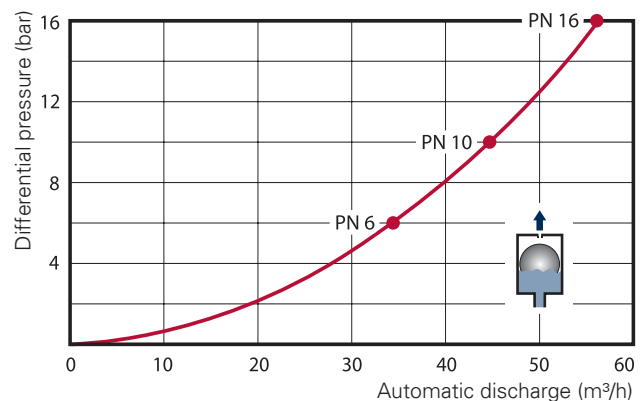
Advantages:

- Easy to clean, complete valve insert being removed through the top.
- Quickly mounted – with Storz coupling for easy connection to the process.
- Easy handling – from gross weight of 16 kg upwards.
- Low height of from 610 mm.
- Double benefit thanks Storz coupling, also used as flush connection.
- Load resistant thanks to freely swinging, rotating and springy float.
- Explosion prof – Available in ATEX version.

Intake and start-up discharge



Automatic (permanent) discharge



* Optional execution

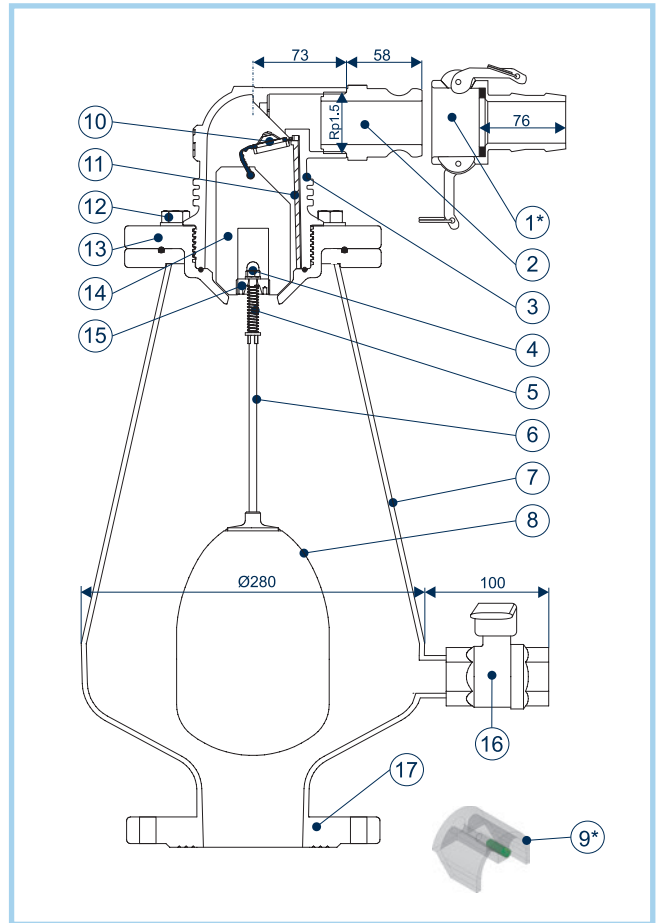
Manufacturing tolerances not taken into account.

Subject to change without prior notice.

Part list

Pos.	Designation	Material	Alternative
1.*	38mm hose fitting	PPGF	Stainless steel
2.	Drainage connector (1½")	PAGF	Stainless steel
3.	Housing head	PAGF	VA, Duplex
4.	Cap nut	Stainless steel	Duplex
5.	Spring	Stainless steel	Inconel
6.	Float rod	Stainless steel	Duplex
7.	Housing	Steel EKB	VA, Duplex
8.	Float	PP	PC, stainless steel
9.	Throttle adaptor	POM and stainless steel	-
10.*	Sealing system	EPDM	VITON, NBR
11.*	Fixation	PAGF	PVDF
12.*	Screw/Nut (4x)	Stainless steel	Duplex
13.	Adapter flange	PAGF	VA, Duplex
14.*	Moulding	PPGF	ASA
15.	Stopper	Acetal	-
16.	Drain cock	PAGF	VA, PVC
17.	Flange (DN50-DN200) without thread 2", 3" STORZ coupling	Stahl EKB	Stainless steel Duplex, PAGF
	All O-rings	NBR	Viton*, EPDM

* optional



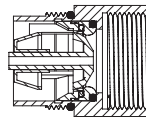
Sizes and weight

Connection	Steel/EKB	Stainless steel
2" male	16,5 kg	16,0 kg
3" male	16,5 kg	16,0 kg
DN 50	17,5 kg	17,0 kg
DN 80	18,5 kg	18,5 kg
DN 100	19,5 kg	19,5 kg
DN 150	21,0 kg	21,0 kg
DN 200	24,0 kg	22,0 kg

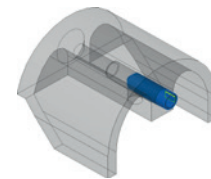
Heights

Design	Approx. height
Valve with outer thread (male)	645 mm
Valve with flange connection	610 mm
Valve with STORZ coupling	670 mm
Valve with flange and dual STORZ	740 mm

Accessories



Throttle adapter for gentle closing (FISO)



Throttling screw for compressed-air flushing (FISO)