



# ORELL

## Compact Filter Pack CFP 03

Ultralight and compact - the Multi-purpose system  
Simplifies servicing of small power packs

OHF 920



Oil Service Unit CFP



Suction-return Adapter

- › Exclusive solution for tanks 1 - 100 l
- › Perfect device for maintenance services
- › Filter elements EXAPOR®MAX 2
- › Electric motor with switch
- › Hydraulic hoses included
- › CE marking

### Description

#### Maintenance of small power packs

The CFP is a multi-purpose off-line filter unit, dedicated to servicing small power packs on a daily basis, not only to be used during start-up or a breakdown. Thanks to its characteristics, the CFP fills the gap in the market as a first unit designed not only for filling but also for cleaning of hydraulic systems.

#### Ideal service equipment

The compact size and low weight make the device easily transportable from machine to machine without needing any extra transport aids.

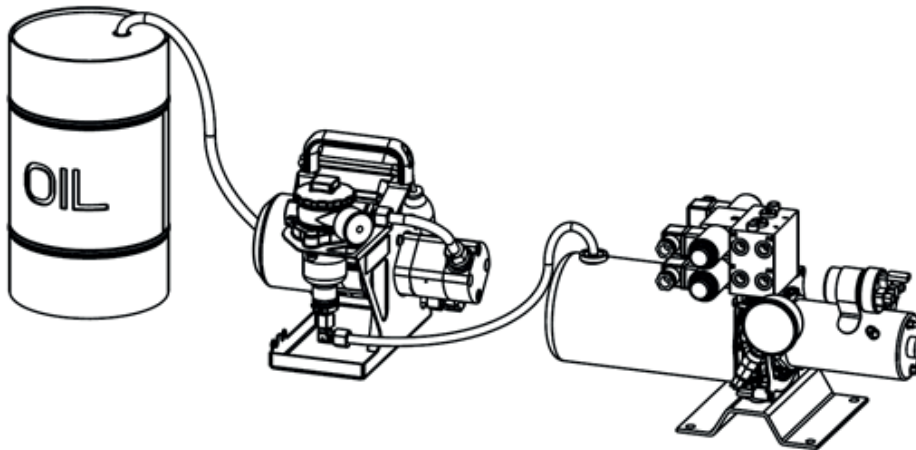
The CFP can be used in systems where other devices are not applicable: in machines with difficult access to the oil tank or when working at height.

#### Dirt-holding capacity

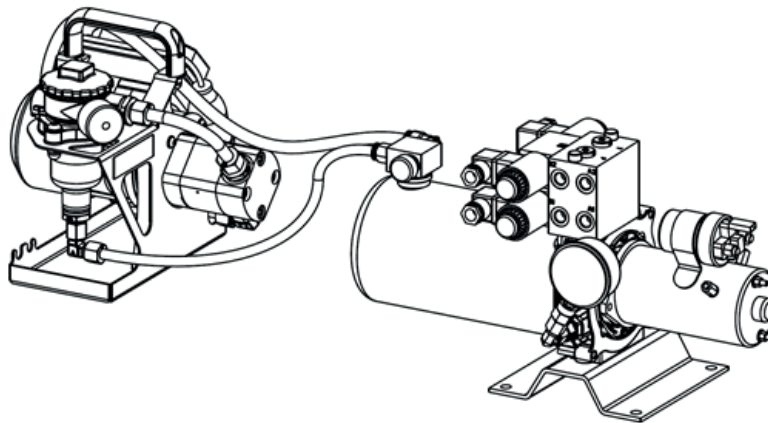
The dirt-holding capacity values in grams from the ISO MTD test dust are in accordance with the ISO 16889 requirements.

#### Multi-purpose system

The CFP unit can be used for transferring oils, filling of systems with filtered oil or for off-line filtration. Off-line filtration is possible even in systems where only one connection port is available. The special suction-return adapter allows both the suction and the pressure hose to be connected to the tank (for example via the ventilating filter port).



Application example 1:  
Oil transfer, filling of the small power pack with fresh oil.



Application example 2:  
Service of hydraulic systems. Off-line filtration at small power packs with only one available connection port.  
Suction-return adapter installed in the ventilating filter port.

## Characteristics

### Hydraulic connection

#### Hoses:

Suction hose DN8, length 2.2 m / 7.2 ft  
Pressure hose DN8, length 2.0 m / 6.6 ft  
Free end of hoses closed by protective caps

### Electrical connection

*Electric motor, air cooled fan with ON/OFF switch*

Cable: length 2.5 m / 8.2 ft  
Voltage: 1 ~ 230 V AC / 50/60 Hz  
Protection class: IP 54

### Pump design

External gear pump with suction strainer installed in the suction port

### Operating and transport position

Upright

### Hydraulic fluids

Mineral oil and biodegradable fluids  
Motor oils (see info sheet 00.20)  
Other fluids on request

### Temperature range of fluids

0 °C ... +60 °C / +32 °F ... +140 °F

### Ambient temperature range

0 °C ... +50 °C / +32 °F ... +122 °F

### Viscosity range

10 - 600 mm<sup>2</sup>/s - continuous operation  
10 - 800 mm<sup>2</sup>/s - short-term operation

## Selection Chart

	Order No.	Order No.	Order No.
	CFP 03-13	CFP 03-16	CFP 03-18
Nominal flow rate at $v = 35 \text{ mm}^2/\text{s}$	2.5 l/min* / 0.7 gpm*	2.5 l/min* / 0.7 gpm*	2.5 l/min* / 0.7 gpm*
Filter fineness ( $B_{x(c)} = 200$ according to ISO 16889:1999)	5EX2	10EX2	16EX2
Dirt holding capacity	15 g	15 g	11 g
E-Motor operating voltage	1 ~ 230 V AC	1 ~ 230 V AC	1 ~ 230 V AC
E-Motor operating frequency	50/60 Hz	50/60 Hz	50/60 Hz
E-Motor power	0.06 kW*	0.06 kW*	0.06 kW*
Length of suction hose	2.5 m / 8.2 ft	2.5 m / 8.2 ft	2.5 m / 8.2 ft
Length of pressure hose	2.5 m / 8.2 ft	2.5 m / 8.2 ft	2.5 m / 8.2 ft
Suction height max.	2.5 m / 8.2 ft	2.5 m / 8.2 ft	2.5 m / 8.2 ft
Operating pressure max.	3.5 bar / 50.8 psi	3.5 bar / 50.8 psi	3.5 bar / 50.8 psi
Hydraulic symbol	1	1	1
Replacement element Order no.	V3.0510-53	V3.0510-56	V3.0510-58
Cracking pressure of by-pass	2.5 bar / 36.3 psi	2.5 bar / 36.3 psi	2.5 bar / 36.3 psi
Clogging indicator	Manometer	Manometer	Manometer
Weight	10 kg / 22 lbs	10 kg / 22 lbs	10 kg / 22 lbs

\* Indications at 50 Hz. At 60 Hz the value increases by approx. 20 %.

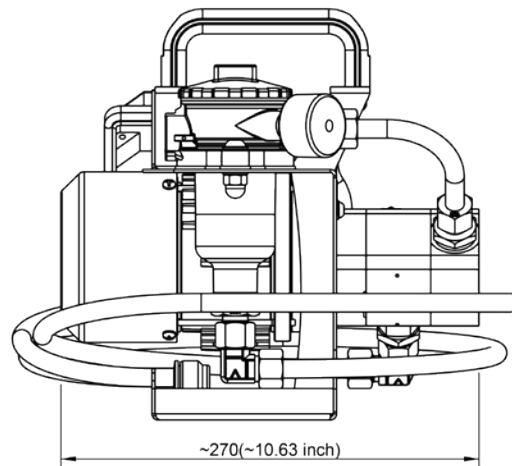
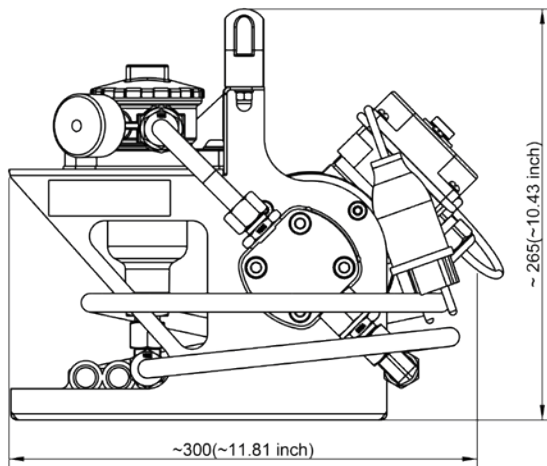
### Accessories:

#### › Suction-return adapter CFP-A-09/05

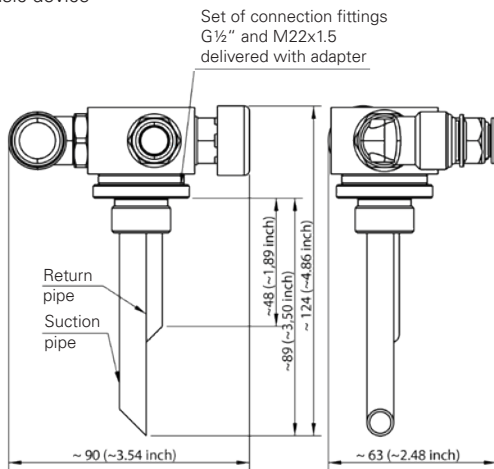
### On request:

- › Customized versions
- › Hose extensions
- › Filter elements with other finenesses
- › Adapter with other length of suction and return pipe
- › Adapter with larger connection fittings than indicated
- › Connecting fitting  $G\frac{1}{2}"$ , M22x1.5 (or other customized sizes) for installation of the suction-return adapter in plastic tanks

## Dimensions

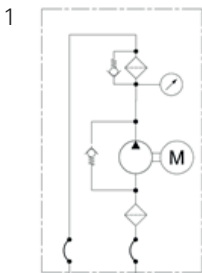


Basic device



Suction-return adapter

## Hydraulic Symbol



## Quality Assurance

### Quality management according to DIN EN ISO 9001

To ensure constant quality in production and operation, our filter elements undergo strict controls and tests according to the following ISO standards:

ISO 2941	Verification of collapse/burst pressure rating
ISO 2942	Verification of fabrication integrity (Bubble Point Test)
ISO 2943	Verification of material compatibility with fluids
ISO 3968	Evaluation of pressure drop versus flow characteristics
ISO 16889	Multi-Pass-Test (evaluation of filter fineness and dirt-holding capacity)
ISO 23181	Determination of resistance to flow fatigue using high viscosity fluid

**Various quality controls during the production process guarantee the leak-free function and solidity of our filters.**